

Verila Li Complex EP 3 VG320 PTFE

Heavy Duty • High Temperature • Extreme Pressure • Lithium Complex Grease with PTFE

Verila Li Complex EP 3 VG320 PTFE is extra Heavy-Duty grease developed for the extreme automotive and Industrial applications. It is based on lithium complex thickener and blend of synthetic and high-quality mineral base oils of ISO VG320 viscosity grade. The grease contains the additives which provide extraordinary extreme pressure performance, rust and corrosion protection and resistance against oxidation, leading to extended bearing life. In addition, this grease contains PTFE dry lubricant which provides superior anti-wear protection and withstanding of extremely high and shock loadings.

- Very Wide Operating Temperature range, from -30 up to 160 degrees Celsius.
- Contain PTFE Dry Lubricant, offering excellent protection against wear, even under frequent shock loads and oscillating movements.
- Very Good Mechanical Stability, resistant against softening.
- Superior High Load Carrying Capacity, protecting equipment exposed to heavy and shock loads.
- Excellent Resistance against water wash-out, even in the presence of severe water contamination.
- Excellent Oxidation Stability prolong grease life.
- Very Good Rust and Corrosion Protection.

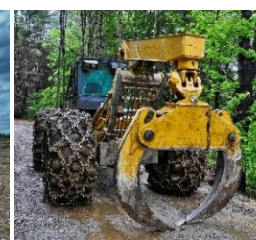


Product is a very good solution for extreme operating conditions. Typical Applications are: • Heavy duty off-road vehicles and machinery in mining, quarrying, agricultural, forestry and construction sectors: lubrication of heavy loaded bearings, pins, bushings, buckets, shovels, chassis, joints, axels, fifth wheels • Various industrial stationary machinery in cement, steel and other industries.



Technical Data

Grease Classifications		
ISO 6743-9 L-XCEHB 3 • DIN 51502 KPF3P-30		
Test Parameter	Test Method	Value
Appearance	Visual	Smooth and Homogenous
Color	Visual	Yellow-to-Brown
Thickener		Lithium Complex
Dry Lubricant		PTFE
Base Oil Viscosity at 40°C, mm ² /s	EN ISO 3104	320
NLGI Grade	ASTM D217	3
Operating Temperature Range		-30 to 160 Celsius
Cone Penetration, Worked, 0.1 mm	ISO 2137	220 – 250
Dropping Point	ISO 6299	> 240 Celsius
Rust Protection	ASTM D1743	Pass
Rust Test, EMCOR	ISO 11007	0-0
Water Washout Test at 79°C, wt.% loss	ISO 11009	3% Typical
Four-Ball EP Test, Weld Point, N	ASTM D2596	min 5000



While the information and figures given here are typical of current production and compliant with VERILA specification, minor variations may occur